



## Empowering Tamariki to Become Rangatira Who Value the Past to Create the Future

MESSAGE FROM THE PRINCIPAL

Rochelle Jensen

Kia ora e te whānau! Talofa lava! Mālō e lelei! Ni sa bula! Kia orana! Fakaalofa lahi atu! Kam na mauri! Namaste! Vanakkam! Sat Sri Akaa! Ayubowan! Mabuhay! Selamat datang! Sawasdee! Mingalaba! Asalaam Walaikum! Hallo! G'day! Howzit! Bonjour! Konnichiwa! Nǐ hǎo! Olá! Hello!

The 2026 school year has begun with a positive and settled start across our kura(school).

A special welcome to our new students and their families, and to our new staff — Whaea Ayla, Matua Tama, and Matua Amo. We are delighted to have you join our Gate Pā School whānau.

Our staff have worked quickly and deliberately to build strong connections with all tamariki (children), creating a welcoming, caring, and purposeful learning environment. Clear routines are now well established, supporting tamariki to feel confident, settled, and ready to make progress in their learning.

While **learning** progress remains our number one focus, this sits within an environment deeply committed to growing students of good **character** who stand proud in their **culture** and identity and who understand and honour Te Tiriti o Waitangi.

### Leadership Update

- I am pleased to be back following my Term 4 sabbatical, where I focused on best-practice teaching, particularly in writing. Thank you to Ari Reedy for her outstanding leadership during my absence, and to all staff for their professionalism and care. We are very fortunate to have such a strong team at Gate Pā School.
- Gate Pā School Learning Focus for 2026:
  - Maintain strong gains in Reading and Mathematics
  - Strengthen Writing through high-quality teaching practice across the school

School Starts: 8.55am -- School Ends: 2.55pm

Report Attendance  HERO app or 578 5325 -ext 1

[www.gatepa.school.nz](http://www.gatepa.school.nz)



**Gate Pā School**  
Pukehinahina

# WHĀNAU – SCHOOL COMMUNICATION

Thursday 12<sup>th</sup> February 2026

Newsletter No.1 2026



Follow us on Facebook – Gate Pā School – Pukehinahina

## Attendance: Continuing Our Commitment

Attendance is critical to learning success. Our school-wide goal is 90 +% attendance everyday . It is the responsibility of parents and whānau to ensure that their children attend school every day. With the support of the Ministry of Education and community organisations, including iwi, we will continue to use every resource available to improve attendance. If barriers arise — such as transport, uniform, or kai — please contact us early. Please see the attached *Attendance Plan*. It clearly outlines the steps we will take to support regular attendance.

## Important Reminders

- School starts: 8:55am. Staff are not available to supervise children until after 8:30am as they are busy preparing for the day.
- School finishes at 2:55pm. Staff are unable to supervise children after 3:15pm. Please show respect for our staff by ensuring your child is picked up on time.
- A small number of *Out of Zone* places are available (contact the office or see our website)
- Policies – all our school policies are available on our school website – Our School – Charter, Policies and Reports – username: gatepa | password: gatepa
- Board of Trustees Meetings- all meetings start at 5:30pm and are open to the public :term 1 dates : 17 February, 24 March.
- The gully is closed due to weather damage — please stay well clear.
- HERO is our main communication tool — please ensure notifications are on.

## Concerns & Compliments

At Gate Pā School, we value open communication and aim to resolve concerns quickly and respectfully. If you have a question or concern:

- 💡 Start by speaking to your child's classroom teacher.
- 💡 If needed, talk to a team leader or senior staff member.
- 💡 For further support, contact the office to make an appointment with the principal.

## Upcoming Events

👨👩👧👦 Whānau Partnership BBQ. Thursday 26 February @ 4pm. Bring a picnic rug and join the fun!



I sincerely look forward to a successful 2026 as we work together to support strong learning progress, cultural pride, and the development of good character in our children.

Nāu te rourou, nāku te rourou, ka ora ai te iwi.

Ngā mihi,  
Rochelle Jensen

Principal / Tumuaki

School Starts: 8.55am -- School Ends: 2.55pm

Report Attendance 📧 HERO app or 578 5325 -ext. 1

[www.gatepa.school.nz](http://www.gatepa.school.nz)



Gate Pā School  
Pukehinahina

## Attendance Plan

Together with the Ministry of Education, we are committed to supporting all tamariki to attend school regularly.

**Regular attendance is crucial for a child's learning and well-being.**

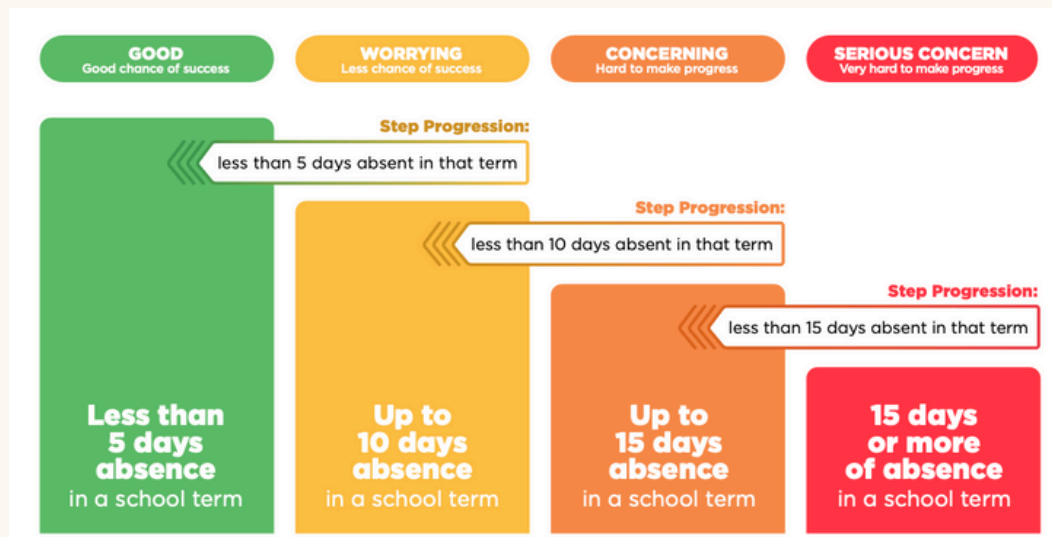
**Regular attendance = less than 5 days absent per term.**

**A partnership between school and home is crucial.**

**The school is here to support with barriers. Please let us know how we can support you.**

Our goal is:  
**tamariki attending more than 90% of the time**  
which aligns with the national target.

### What will happen if my child is away?



**Regularly present – attending more than 90%**

#### Good Attendance

- **celebrate and acknowledge** through certificates and rewards
- **communicate** with whānau about the importance of attendance
- **monitor** daily

**Irregularly present – attending between 80%-90%**

#### Worrying Attendance

- **contact parents** to discuss reasons for absence
- **identify barriers** to attendance
- **support whānau** to help address barriers

**Moderately absent – attending between 70% -80%**

#### Concerning Attendance

- **formal notification** to whānau
- hold **face-to-face meetings** for attendance discussion
- **collaboratively develop a plan** tailored to the whānau
- **engage support services** as appropriate (eg, transport, Public health nurse, school Social Worker)
- **review and monitor** progress (weekly)

**Chronically absent – attending 70% or less**

#### Serious Concern

- **formal letter** and whānau meeting
- begin **multi-agency response**
- if supports have been offered and not accepted, undertake **Ministry- led action**
- **unenrol** if all options have been exhausted

Our **STAR** plan has been implemented to improve student attendance and learning outcomes. These actions are tailored to the reasons for absence and with our consideration to the child and whānau.



**Te Tāhuhu o te Mātauranga**  
Ministry of Education